



# Delta L06/L07 English

## Compano Online Software

**Version 1.2**

<b>File</b>	Delta_L06_L07_CALC_EN.pdf
<b>Date</b>	4-3-2025

# Content

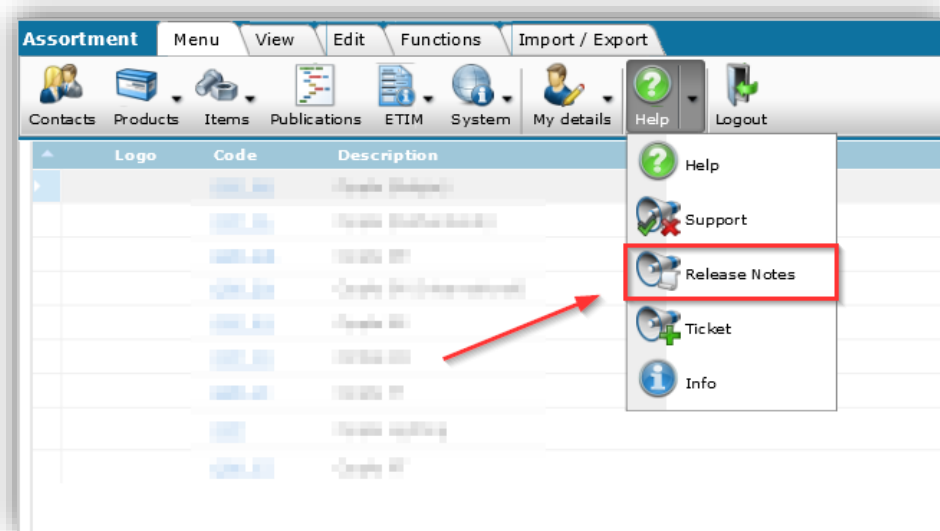
<b>1</b>	<b>Introduction</b>	<b>3</b>
1.1	Concepts	3
<b>2</b>	<b>Updates and changes</b>	<b>3</b>
2.1	Standards by product	3
2.2	User-defined fields	5
2.3	New user right on Attachments Overview	6

## 1 Introduction

Compano's online software (COS) has been updated from version L06 to version L07. This document describes the most relevant changes and innovations

A full overview of the differences between these versions can be found in the Release Notes of the L07 version. You can find these in the main menu under *Help*:

Note: The Release Notes are only available in English.



### 1.1 Concepts

COS	Compano online software.
L version	Lion version of Compano online software.
UDF	User-defined fields; User-specific fields are additional data fields that can be added and modified by the user.

## 2 Updates and changes

In the L07 version of COS Calculation, the following updates are important:

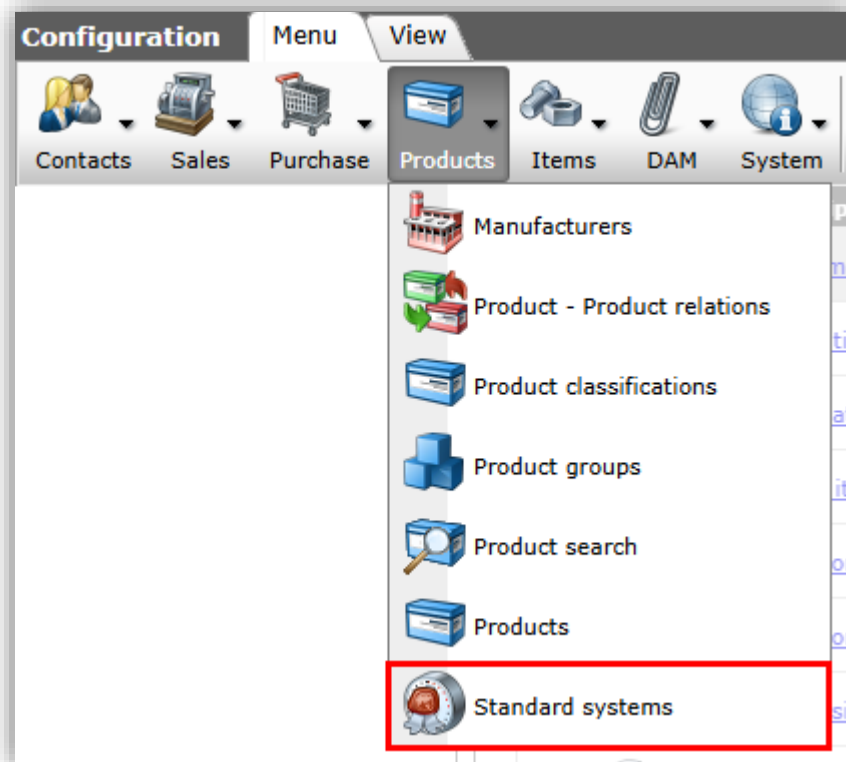
### 2.1 Standards by product

The +Article Standard function now links Standards directly to Products and packs them together into a recipe. This has the advantage that **all** articles related to the product are included in the linked standard when added to a calculation. The combination of article and standard is also added to the calculation as a recipe.

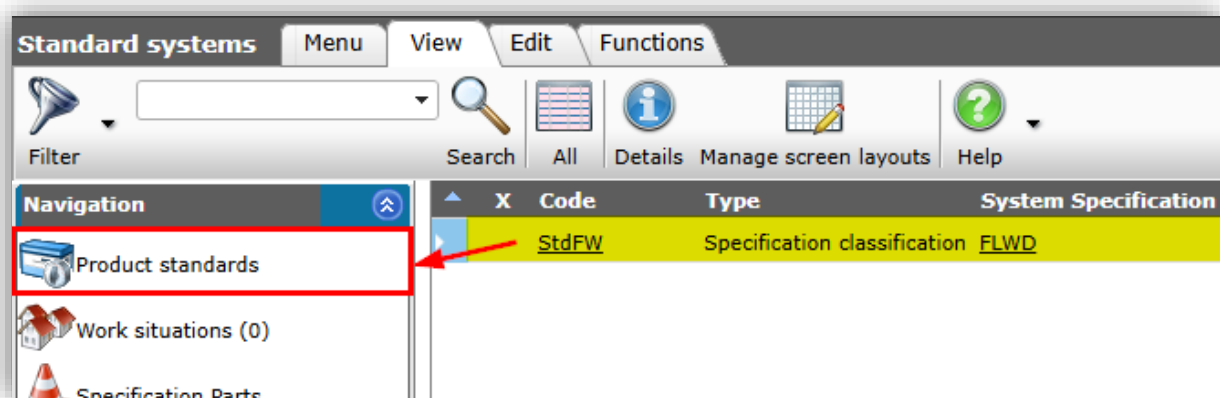
A new link table has been created for this function: *Product standards*. In this linking table, Products can be linked to Standards of an existing or own Standards system:

To link a Product to a Standard:

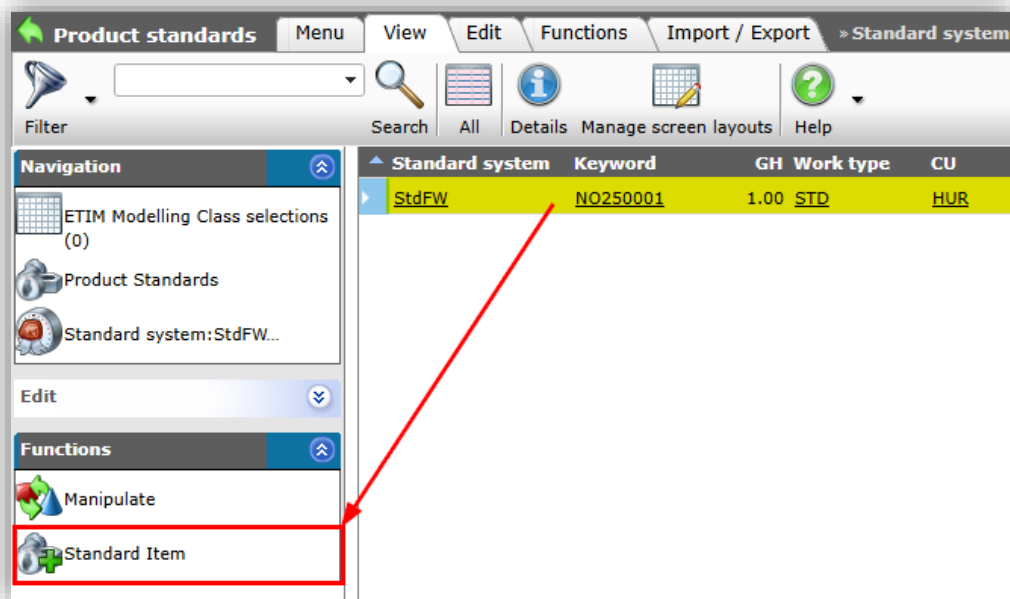
1. Go to *Products > Standard systems via the Menu*:



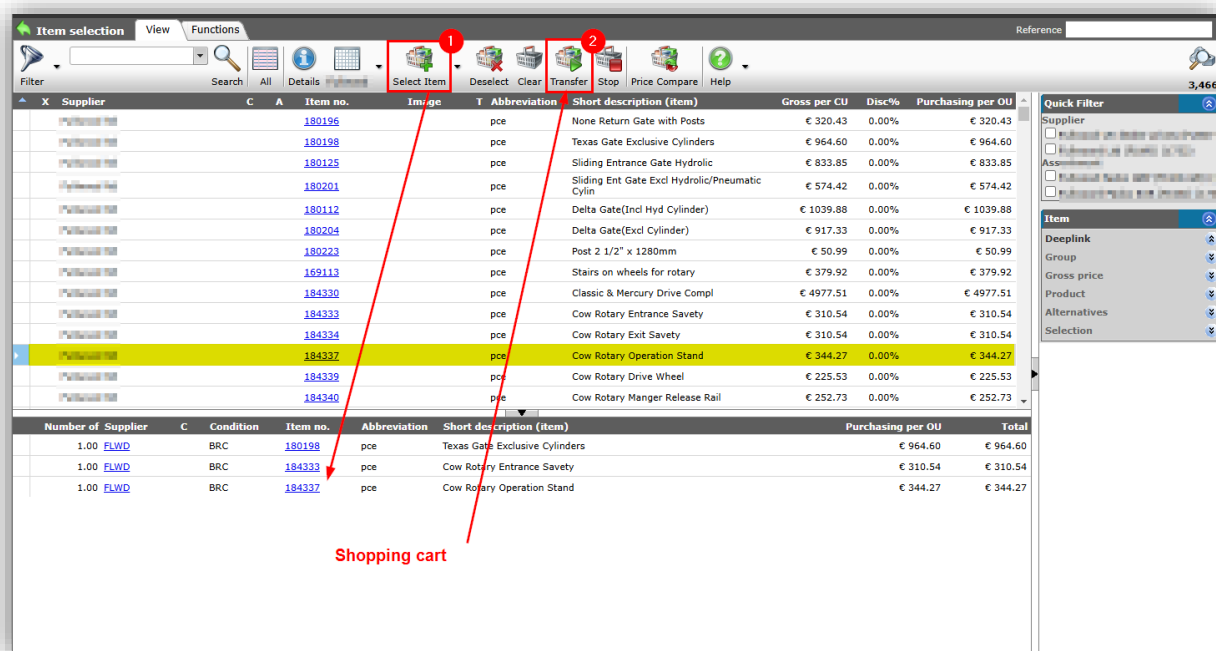
2. Select the standard system where you want to link to and, under Navigation, go to *Product standards*:



3. Select a standard and, under Features, click *AddProductStandard*:



4. In the next screen, you can now select Products to link to this Standard:



- a. Select<sup>1</sup> one or more products and add them *to the 'shopping cart' with Select Item (1).*
- b. Take over the products from the 'shopping cart' with *Transfer (2)*

5. The products from the 'shopping cart' are linked to the previously selected Standard.

## 2.2 User-defined fields

The features and options for user-defined fields have been improved and supplemented. Among other things, non-relevant options per type of field have been removed and more options for formulas and expressions have been added for calculated user-defined fields. For questions about or explanations of these improvements, please contact [support@compano.com](mailto:support@compano.com).

<sup>1</sup> Optionally, use the search and filter options to search for Products.

## 2.3 New user right on Attachments Overview

A new user right has been added to the Attachments overview, "Attachment on Attachments", which manages the right to +*Attachments* . This allows users to disable the right to add attachments in bulk.

Note: For proper handling of Attachment data in industry standards, the +Add function must be used when manually adding Attachments.