



Compano Online Software

Delta L05/L06 PIM Compano Online Software

Version 1.2

File	Delta_L05_L06_PIM.docx
Date	13-9-2024

Contents

1	Introduction.....	3
1.1	Concepts	3
2	Overview of the most important changes.....	3
3	New in Compano	3
3.1	ETIM xChange export.....	3
4	Updates and changes	5
4.1	DQR update.....	5
4.1.1	ArticleType	5
4.1.2	Manual control over group codes	5
4.2	Country-specific fields update	6
4.2.1	ArticleType DQR	6
4.2.2	Country-specific Fields by product available in Item field selector	6
4.3	FAB-DIS update.....	6
4.3.1	ACS	7
4.3.2	PEP Ecopassport	7

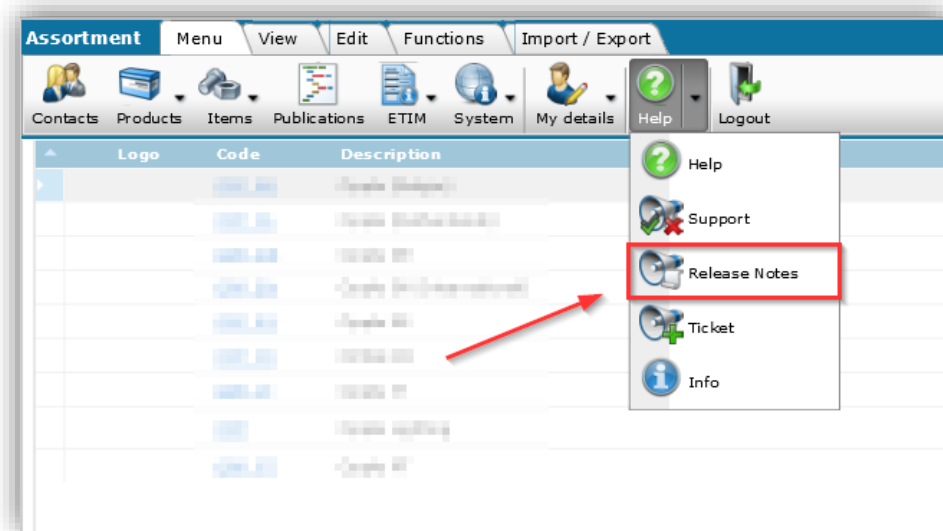


1 Introduction

Compano's online software (COS) has been updated from version L05 to version L06. This document describes the most relevant changes and innovations

A full overview of the differences between these versions can be found in the Release Notes of the L06 version. You can find it in the main menu under *Help*.

Note: The Release Notes are only available in English.



1.1 Concepts

COS	Compano online software.
L version	Lion version of Compano online software.
UDF	User-defined fields; User-specific fields are additional data fields that can be added and modified by the user.

2 Overview of the most important changes

The following features are new for the Compano application version L06:

- DQR update
- ETIM xChange export
- Country-specific fields update

3 New in Compano

3.1 ETIM xChange export

As a successor to the BMEcat standard, Ketenstandaard has developed a new exchange format for ETIM data: **ETIM xChange**. This new JSON format has the advantage that, in addition to exchanging data as a file, it is also better suited for exchanging data via the web. Another big

advantage of JSON is that far fewer characters and data are used to exchange large files with thousands of lines of product data.



The structure of the **ETIM xChange** format distinguishes between *product information* (what is produced) and *item information* (what is sold). A third level of data has been added to also define different *packaging units* for the same trade item. It is also possible to combine information from multiple suppliers into the same file, making it particularly suitable for use by data pools.

In Compano, *ETIMxChange* is available as *an export* format:

Item exports

Send export to: [Text field]

Software package: Other

Free text export: ☐ Yes ☒ No

Item Format: ETIM xChange

Country: Germany

Languages: ☐ de Duits, ☒ en Engels, ☐ es Spaans, ☐ fr Frans, ☐ nl Nederlands (Nederland), ☐ pl Polish, ☐ sv-SE Swedish

Catalog version: 5.0

Customer organization: [Text field]

Add images + attachments: ☐ Yes ☒ No

Prices: Gross prices

Including archived items: ☐ Yes ☒ No

Products (product data + class): ☐ Yes ☒ No

Product features: ☐ Yes ☒ No

Classification system: ETIM Dynamic

Changes since: 01/01/0001

Price reference date: 27/08/2024

Start date: 01/01/2023

End Date: 31/12/2023

Export **Close**

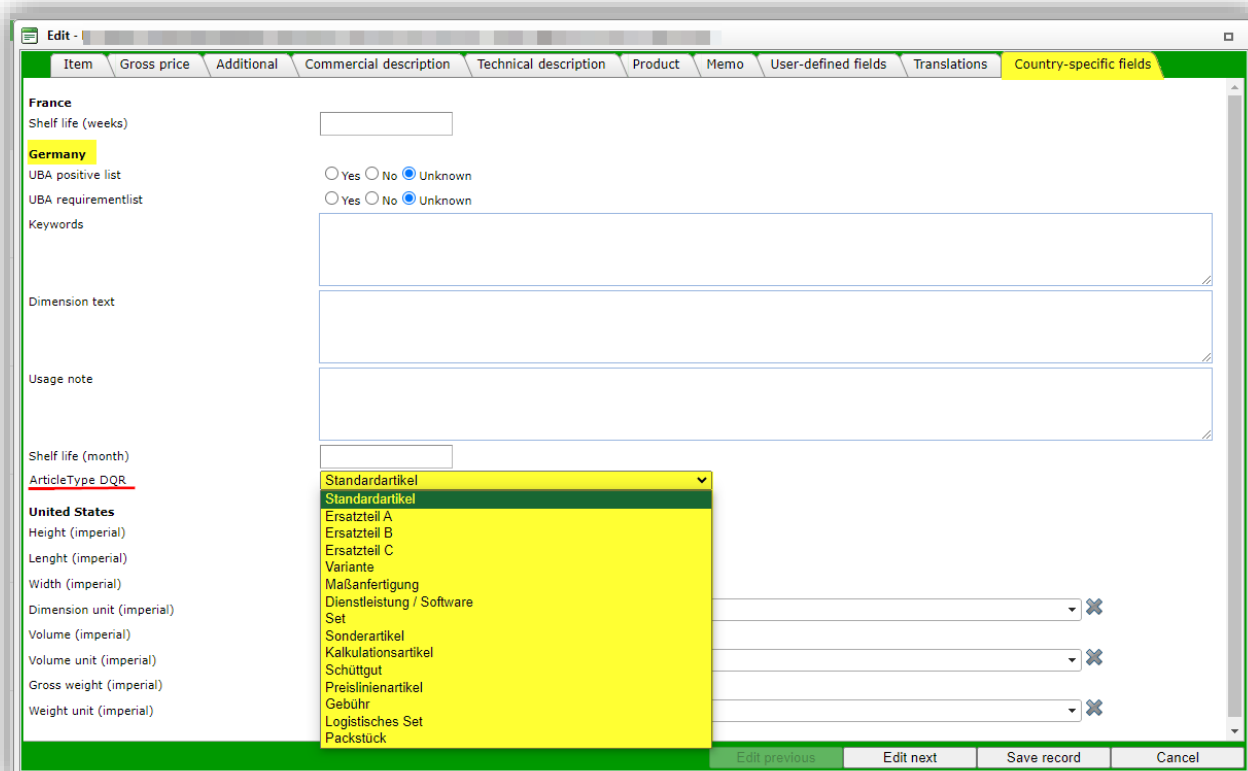
4 Updates and changes

4.1 DQR update

A number of updates have been made for the DQR export format:

4.1.1 ArticleType

The **sArticleType** tag, which indicates the item type, can be populated using the German country-specific data field *ArticleType DQR*.



More information can be found in the *Manual DQR Export*, on the [Compano Help website](#).

4.1.2 Manual control over group codes

When group codes in COS are used for other purposes and thus may not be correct for DQR exports, the default fallback options cannot be used. In this case, the necessary codes for a DQR export can be populated by first adding one or more specific user-defined *fields* to the *Item entity*.

DQR_sDiscountgroup	Single choice	DQR sDiscountgroup RG
DQR_sProductgroup	Single choice	DQR sProductgroup PG
DQR_sWaregroup	Single choice	DQR Waregroup WG
DQR_sBonusgroup	Single choice	DQR_sBonusgroup BG

- **DQR_sDiscountgroup**: Discount group code for DQR (max 4 characters)
- **DQR_sProductgroup**: Product group code for DQR (max 10 characters)
- **DQR_sWaregroup**: Article group code for DQR (max 3 characters)
- **DQR_sBonusgroup**: Bonus group code for DQR (max 35 characters)

Important: This option is only available with the user-specific license fields; for more information and pricing, contact sales@compano.com.

4.2 Country-specific fields update

4.2.1 ArticleType DQR

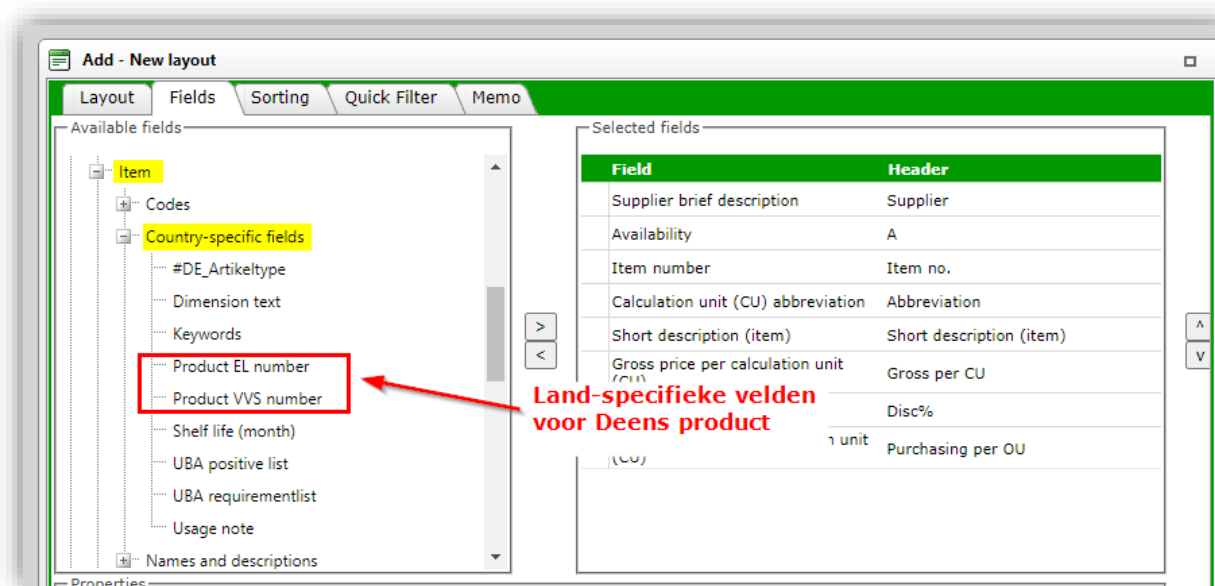
The field **ArticleType DQR** has been added to the country-specific fields for Germany. This field controls the content of the **sArticleType** tag and is important for a correct DQR export. See also the previous section [4.1.1 ARTICLETYPE](#).

More information can be found in the *Manual DQR Export*, on the [Compano Help website](#).

4.2.2 Country-specific Fields by product available in Item field selector

All product-specific country-specific fields can now be selected in the item field selectors (screen layout, export layout).

Note: These fields do *not* appear in the Detail, Edit, and Filter pop-up screens.



Important: Country-specific fields available for Product appear in the field selector under the Item category > *Country-specific fields*, with the Product prefix.

4.3 FAB-DIS update

A number of updates have been made for the FAB-DIS export format.

Note: These changes have also been patched in COS version L05; thus, when migration from COS-versions L02, L03 or L04 to version L05 or newer, please check the changes described below.

4.3.1 ACS

When migrating from an older COS-version to version L05 (or newer), please make sure to *convert any existing ACS-certificates* (usually of certificate type **Other**) to the new certificate type **ACS**, which is correct for FAB-DIS.

Note: The *code* of the ACS-certificate (Sanitary Conformity Certificate) should be filled out in the *Number* field of the certificate. This code will then be exported as **RTEXTE** in the FAB-DIS format:

The screenshot shows a software window titled "Edit - ACS Sanitary Conformity Certificate". It has a "General" tab selected. Under "General", there are fields for "Certificate type" (set to "ACS Sanitary Conformity Certificate"), "Name", "Description", "Issued by" (set to "Carso"), "Number" (set to "20 ACC LY 125", highlighted in yellow with a red arrow pointing to the text "RTEXTE"), "Sub number", "Additional" section with "Claim type" (set to "None") and "Claim description".

4.3.2 PEP Ecopassport

Existing PEP Ecopassport certificates have often been created as EPD-certificates. As of COS software version L05, these certificates can now be linked to the PEP-certificate type which is correct for FAB-DIS. Note, however, that it is necessary to *manually link* any existing EPD-certificate type that is actually a PEP-type to the new PEP-certificate type. Existing certificate types are *not* repaired by the *Autofill* function on Certificate types in Configuration. Also, possibly not all EPD-certificates automatically have to become a PEP-certificate.