



Compano Online Software

Delta L04/L05 PIM Compano Online Software

Version 1.2

File	Delta_L04_L05_PIM_EN.docx
Date	6-6-2024

Contents

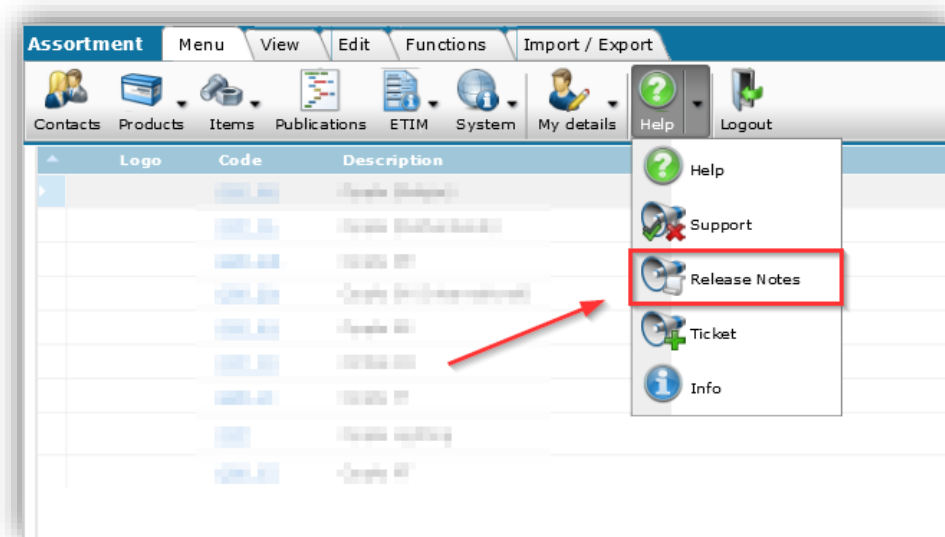
1	Introduction.....	3
1.1	Concepts	3
2	Important changes.....	3
2.1	Authentication (Login)	3
3	New in L05.....	4
3.1	FAB-DIS 3.0	4
3.2	REACH indicator.....	4

1 Introduction

Compano's online software (COS) has been updated from version L04 to version L05. This document describes the most relevant changes and innovations.

A complete overview of the differences between these two versions can be found in the Release Notes of the L05 version. These notes are available in the main menu under *Help*.

Note: The Release Notes are only available in English.



1.1 Concepts

COS	Compano online software.
L-version	Lion version of Compano online software.
UDF	User-defined fields are additional data fields that can be added and customized by the user.

2 Important changes

The following important change have been made to the Compano application, version L05:

2.1 Authentication (Login)

The login method has been replace with a new Authentication system which provides better security and additional login options, including:

- User/password login
- Microsoft authentication (including Active directory Single Sign-on)
- Two-factor authentication (2FA)

The general login URL for Compano applications is:

<https://start.compano.com>

Private applications will have a their own login URL:
[https://\[customer-name\].compano.com](https://[customer-name].compano.com)

More information can be found in the *Manual Authentication*, which available from the [Compano Help-website](#).

3 New in L05

The following features a new for the Compano application version L05:

3.1 FAB-DIS 3.0

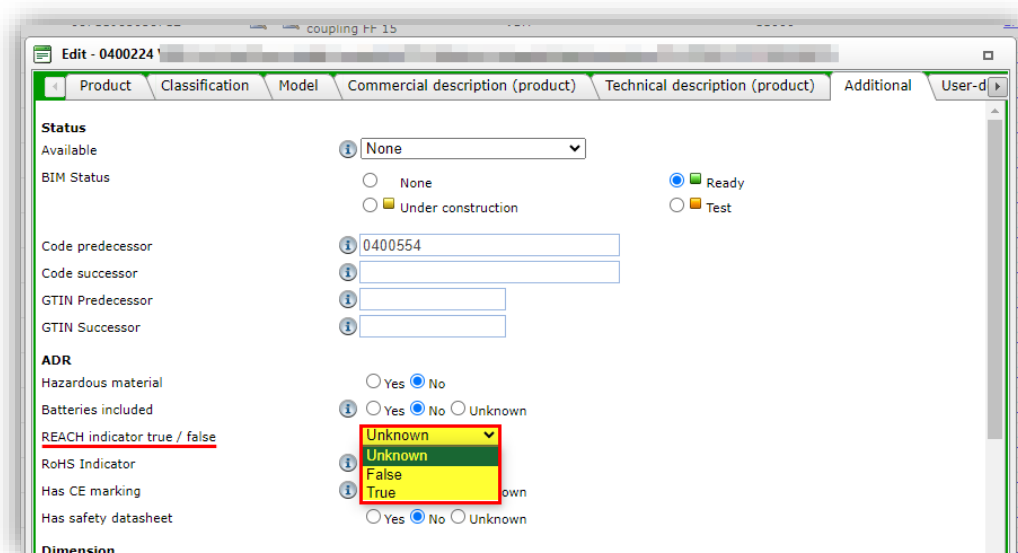
The FAB-DIS export (France) has been updated to FAB-DIS version 3.0. A number of important changes have been made.

More information can be found in the manual *Export FAB-DIS*, which available from the [Compano Help-website](#).

3.2 REACH indicator

REACH is the term used when referring to the European Union's Regulation (EC) 1907/2006, which concerns the Registration, Evaluation, Authorisation and Restriction of Chemicals. Previous to L05, REACH certification could only be established by adding a REACH-certificate to Products. As of Compano version L05, please consider the following:

- A *REACH-indicator* setting has been added as a data field to Products, on the *Additional* tab:



The screenshot shows the 'Edit - 0400224' window with the 'Additional' tab selected. The 'REACH indicator true / false' field is highlighted with a red box, showing a dropdown menu with options: Unknown, False, and True. Other fields visible include 'Status' (None), 'BIM Status' (None, Under construction), 'Code predecessor' (0400554), 'Code successor', 'GTIN Predecessor', 'GTIN Successor', 'ADR' (Yes, No), 'Batteries included' (Yes, No, Unknown), 'RoHS Indicator', 'Has CE marking', and 'Has safety datasheet'.

- The value of this indicator can be set to **True** or **False**. Important: The default value is **Unknown**; always make sure to set the indicator to either true or false, even when a REACH-certificate has been added to the product.
- The REACH-indicator value will be exported in the data standards DICO/SALES005, BMEcat and DQR (9). Note: See the [Compano Help website](#) for more detailed information about data standards.