



Compano Online Software

Delta L04/L05 CALC Compano Online Software

Version 1.2

File	Delta_L04_L05_CALC_EN.docx
Date	29-11-2024

Contents

1	Introduction.....	3
1.1	Concepts	3
2	Important changes.....	3
2.1	Authentication (Login)	3
3	New in L05.....	4
3.1	Cluster recipes rework.....	4
3.2	File stream upload (Artikelbeheer.nl)	4

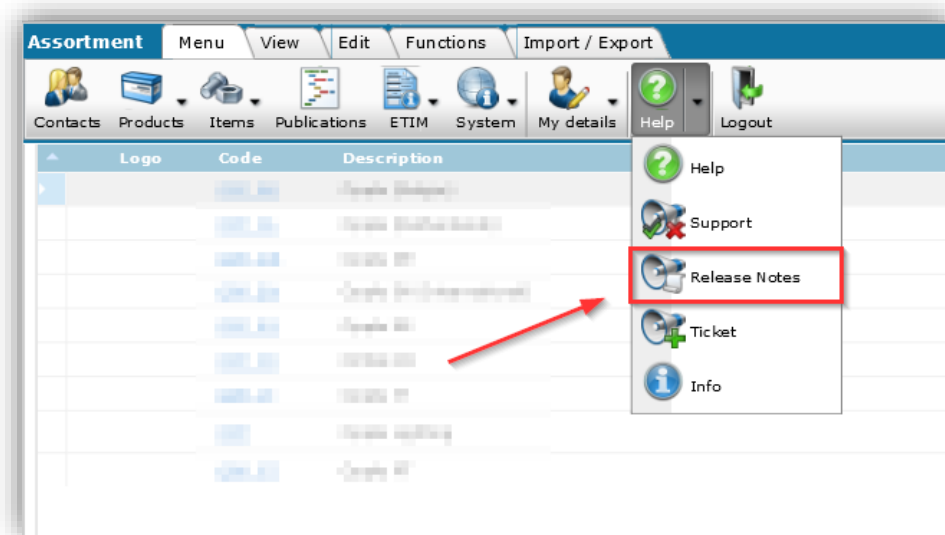


1 Introduction

Compano's online software (COS) has been updated from version L04 to version L05. This document describes the most relevant changes and innovations.

A complete overview of the differences between these two versions can be found in [Release Notes of the L05 version](#). These notes are available in the main menu under *Help*.

Note: The Release Notes are only available in English.



1.1 Concepts

COS	Compano online software.
L-version	Lion version of Compano online software.
UDF	User-defined fields are additional data fields that can be added and customized by the user.

2 Important changes

The following important change have been made to the Compano application, version L05:

2.1 Authentication (Login)

The login method has been replace with a new Authentication system which provides better security and additional login options, including:

- User/password login
- Microsoft authentication (including Active directory Single Sign-on)
- Two-factor authentication (2FA)

The general login URL for Compano applications is:

<https://start.compano.com>

Dedicated applications will have a their own login URL:



[https://\[customer-name\].compano.com](https://[customer-name].compano.com)

More information can be found in the *Manual Authentication*, which is available from the [Compano Help-website](#).

3 New in L05

The following features are new for the Compano application version L05:

3.1 Cluster recipes rework

Recipes can now be added from *within an already existing* Recipe within a Calculation. Thus, a *Cluster recipe* will be created from within a Calculation.

More information can be found in the manual *Calculation Users* (NL only), which is available from the [Compano Help-website](#).

Note: Recipes (or Recipe lines) can now also be added to an existing Recipe using the Copy/Paste method.

3.2 File stream upload (Artikelbeheer.nl)

As an alternative to FTPS, data files can also be uploaded to Artikelbeheer.nl by making use of a *file stream* in combination with the *OAuth authorization protocol*.

Note: The file stream option needs to be built into your application.

Compano will provide you with:

- An OAuth authentication token
- A username and password
- Upload URL: <https://centraal.artikelbeheer.nl/api/DeliveryUpload/UploadFile>

Important: Only industry standard data files, such as DICO/SALES005 can be handled by Artikelbeheer.nl.